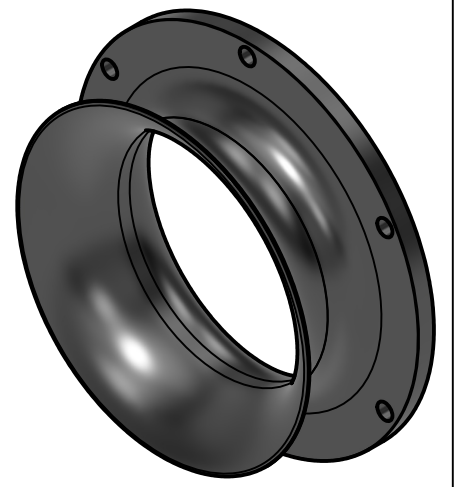
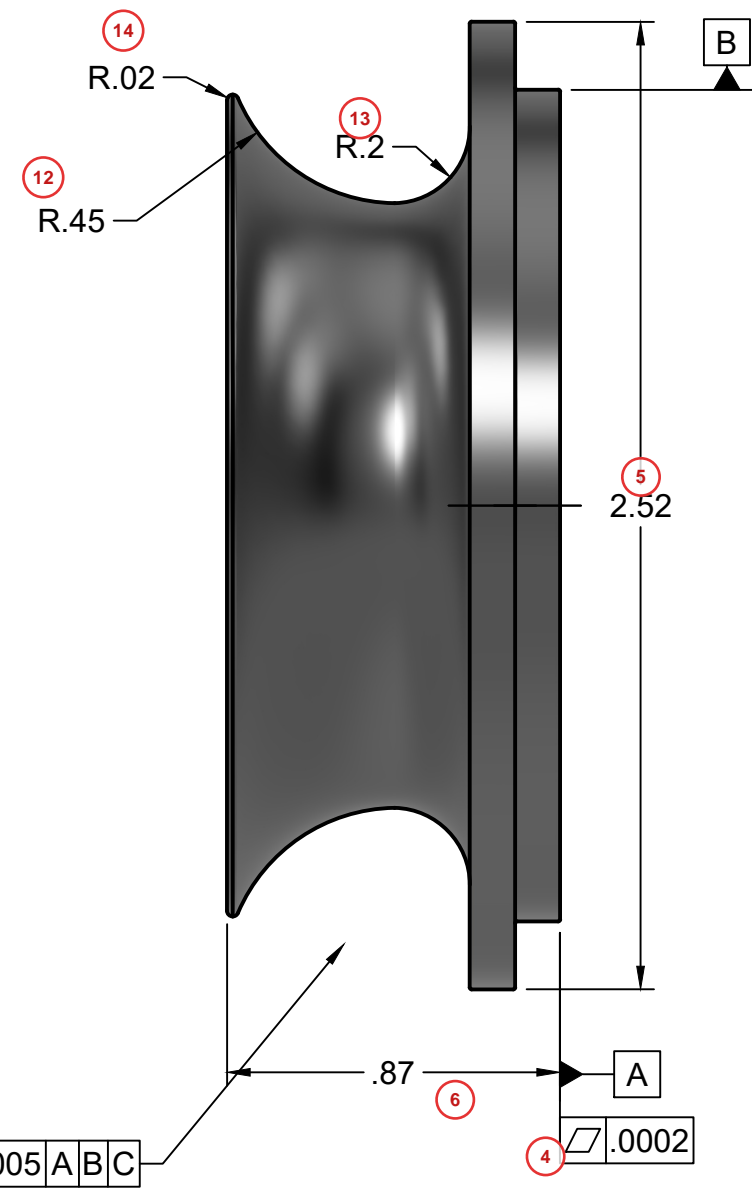
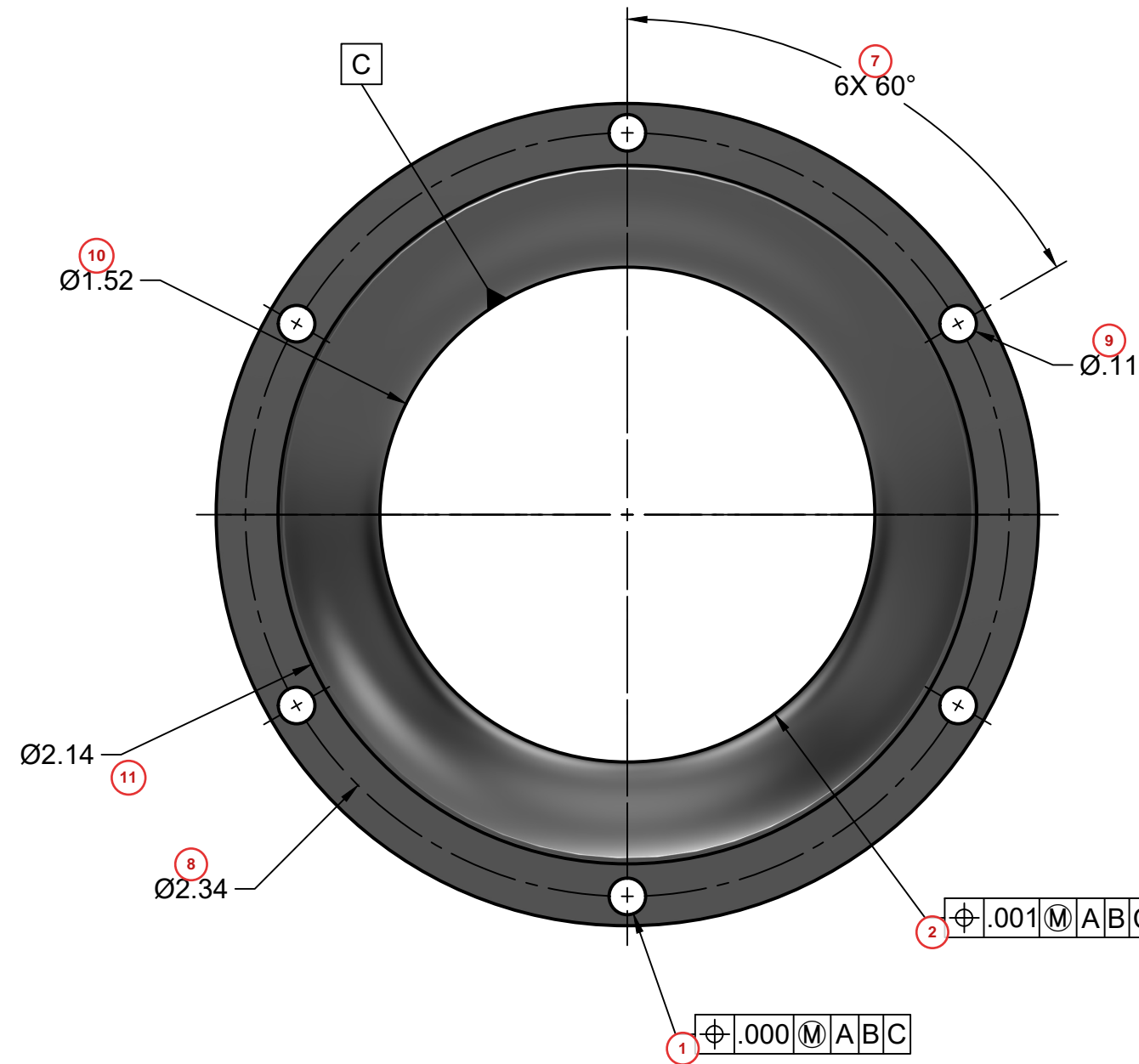



THIS DOCUMENT CONTAINS PROPRIETARY INFORMATION OF GAUGEFLOW QMS AND MAY CONTAIN TECHNICAL, COMMERCIAL, OR CONTROLLED DATA. UNAUTHORIZED REVIEW, USE, DISCLOSURE, OR REPRODUCTION IS PROHIBITED. THIS DOCUMENT IS LOANED ON THE EXPRESS CONDITION THAT IT AND THE INFORMATION CONTAINED HEREIN SHALL NOT BE DISCLOSED TO OTHERS OR USED FOR ANY PURPOSE WITHOUT PRIOR WRITTEN PERMISSION FROM GAUGEFLOW QMS.



NOTES:

- 15 1. REMOVE ALL BURRS AND SHARP EDGES.
- 16 2. BREAK ALL EDGES .005 MAX UNLESS OTHERWISE SPECIFIED.
- 17 3. DIMENSIONS ARE IN INCHES.
- 18 4. DO NOT SCALE DRAWING.
- 19 5. INTERPRET DRAWING PER ASME Y14.5.
- 20 6. MATERIAL: 6061-T6 ALUMINUM UNLESS OTHERWISE SPECIFIED.
- 21 7. FINISH: CLEAR ANODIZE PER MIL-A-8625 TYPE II, CLASS 1.
- 22 8. SURFACE FINISH: 125 µIN MAX UNLESS OTHERWISE SPECIFIED.

		PROJECT				
		Gauge Flow QMS				
		TITLE				
		ASY-47-2186-REV-B				
APPROVED	GF	1/25/2004	SIZE	CODE	DWG NO	REV
CHECKED	GF	1/25/2004	B		ASY-47-2186-REV-B	B
DRAWN	GF	1/25/2004	SCALE 1:1	WEIGHT 3	SHEET 1/1	